

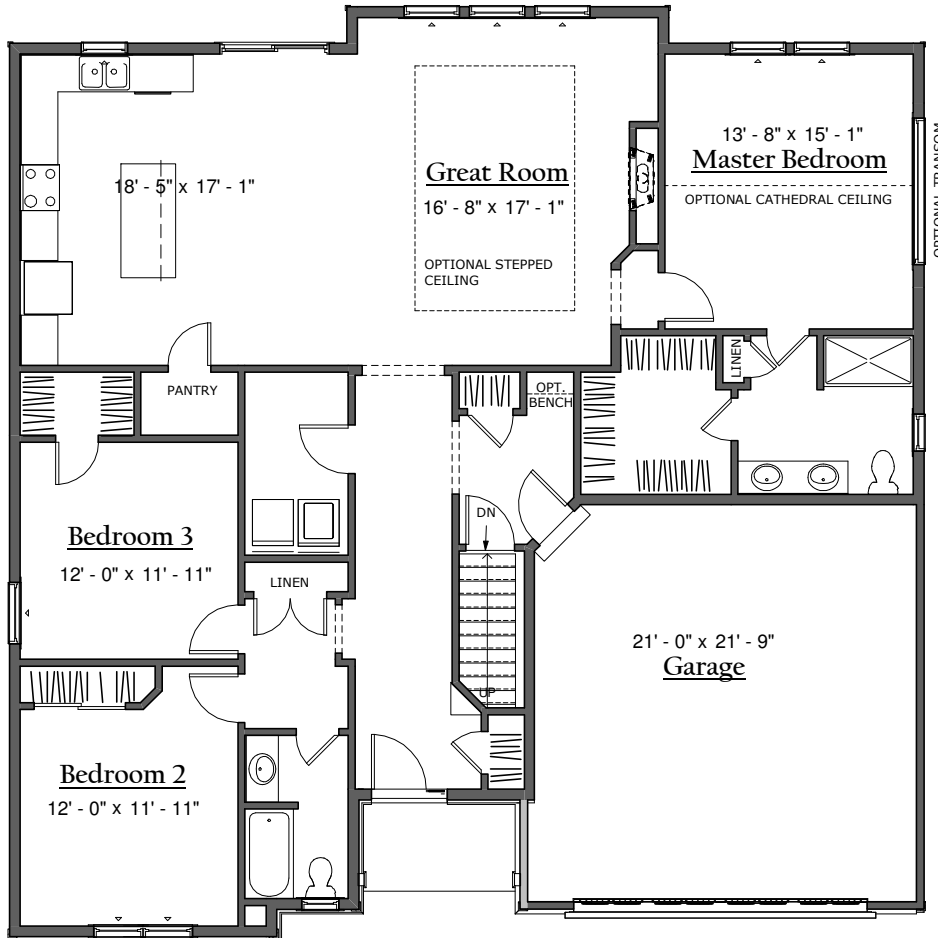
Griffin's Ridge - Round Lake  
 60 Village Circle North  
 Ready - November, 2017



All Information Is For Illustrative Purposes Only And May Include Features And Options That Are Not Part Of The Contract. Refer To Contract Documents For Specific Details. All Information Contained Herein Is The Sole Property Of Belmonte Builders, Inc And Protected Under The Architectural Works Copyright Protection Act And Subsequent Amendments And Shall Not Be Reproduced In Any Form.



5 JUNE, 2017



HEATED AREA CALCULATIONS	
GARAGE	482 SF
First Floor	1888 SF
Grand total	2369 SF

*First Floor*