



The Fallgate Mill

Located in Ashover, Derbyshire, UK; A water mill existed on the site from the early years of the 17th Century, for grinding fluorspar eventually used in steel for early railways on England.

Fallgate



Elevation A:

- Shake siding in upper gable
- Gabled dormer over garage
- Two large brackets at study

Elevation B:

- Shake siding and brackets (6) in upper garage gables
- Two large brackets at study
- Cultured stone wainscoting in front of study and return to foyer
- Large craftsman column at front porch



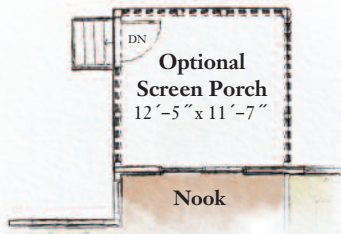
Elevation C:

- Full front porch with square columns
- Vertical siding and brackets (3) in upper gable
- Gabled dormer over garage
- Cultured stone wainscoting in front of study, foyer and garage with two return walls to foyer



Fallgate

3 Bedrooms & Study, 2 1/2 Bathrooms

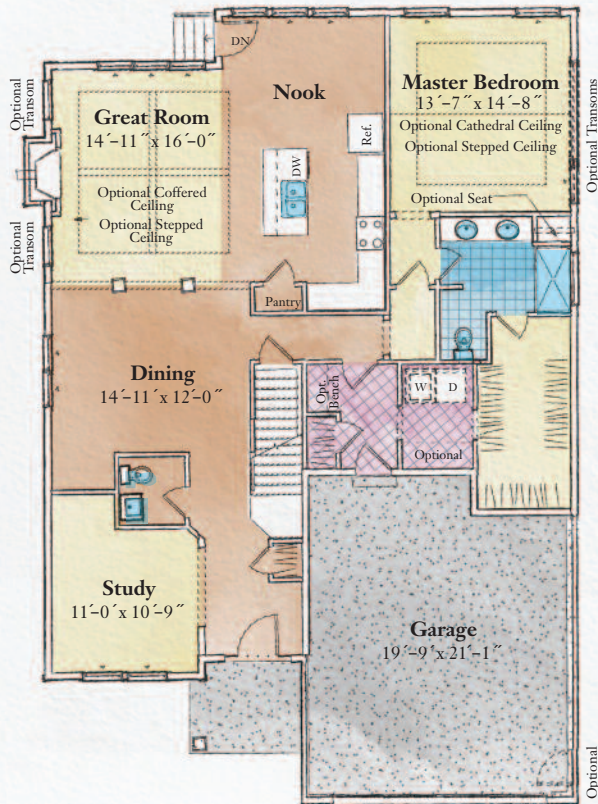


Top Features:

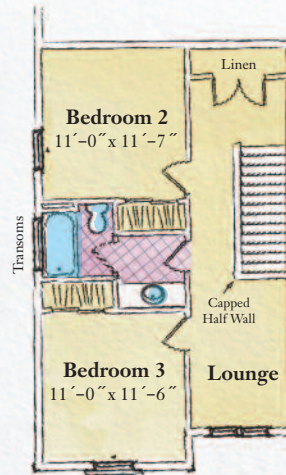
- First floor master bedroom
- Study
- Optional bonus room
- Vestibule entrance to master suite
- Optional screen porch



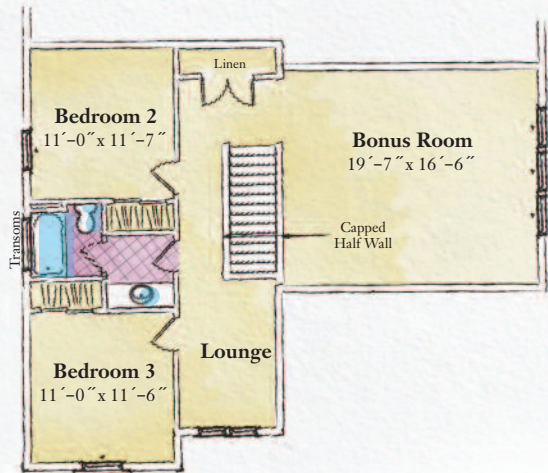
First Floor Plan



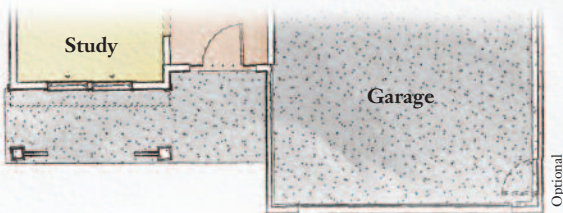
Second Floor Plan



Second Floor Plan
Optional Bonus Room



Elevation C



Some features shown may be optional. Please consult your salesperson for pricing. Optional features may change square footage.

© Copyright Belmonte Builders LLC. All information is for illustrative purposes and may include features and options that are not part of the Contract. Refer to Contract documents for specific details. All information contained herein is the sole property of Peter Belmonte Builders Corp. and is protected under the Architectural Works Copyright Protection Act and subsequent Amendments and shall not be reproduced in any form.