

# SONOMA GROVE

## THE CHESAPEAKE



### Elevation A:

- Double square columns at front porch
- Three flat headers

### Elevation B:

- Shake siding in three gables
- Cultured stone wainscoting in front of study with two return walls



### Elevation C:

- Vertical siding and brackets (8) in garage and two upper gables
- Cultured stone wainscoting in front of house and garage with return walls to laundry and foyers



[www.belmontebuilders.com](http://www.belmontebuilders.com)  
518.371.1000

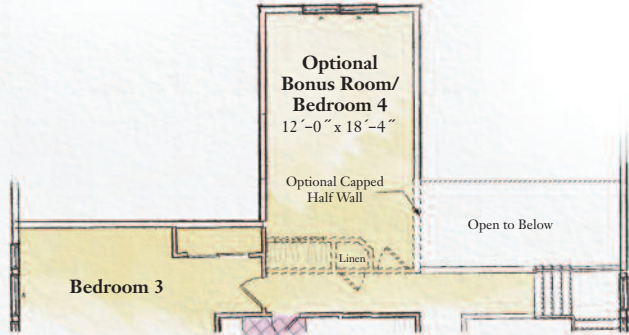
# CHESAPEAKE

3 Bedrooms & Study / 2 1/2 Bathrooms

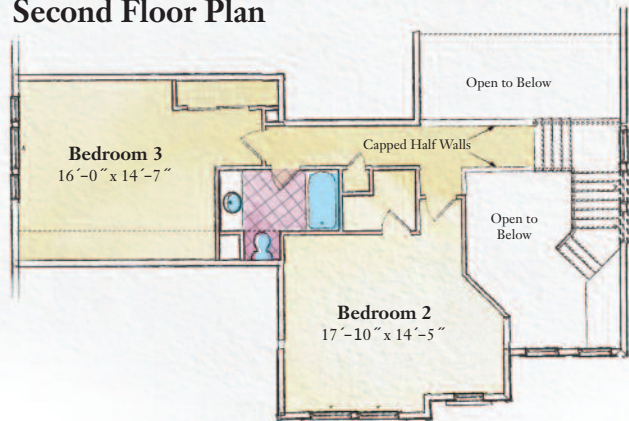
## First Floor Plan



## Second Floor Bonus Room



## Second Floor Plan



### Top Features:

- Large, open two-story foyer
- Vaulted ceiling in great room
- Open great room/kitchen area
- Two large closets in master bedroom
- Unique staircase

 Carpet
  Hardwood
  Tile
  Vinyl



www.belmontebuilders.com  
518.371.1000

Some features shown may be optional. Please consult your salesperson for pricing. Optional features may change square footage.