



The Yates Mill

Yates Mill is a fully restored, circa 1756 gristmill located five miles south of downtown Raleigh, North Carolina. It is the centerpiece of historic Yates Mill County Park, located in central Wake County.

Yates



Elevation Options:

- Cultured stone wainscoting at great room
- Vertical siding in main and garage gable



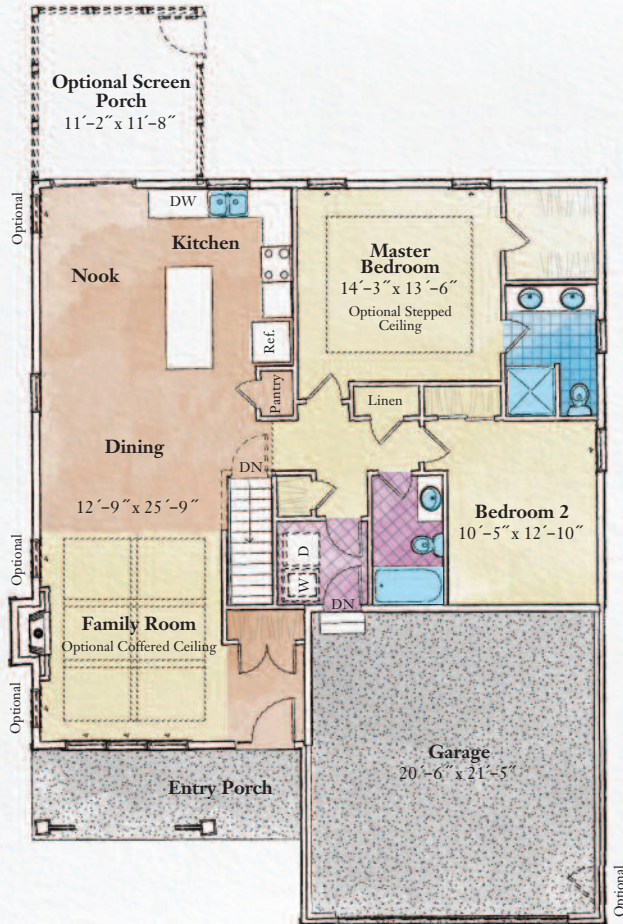
THE MILL at
SMITH BRIDGE



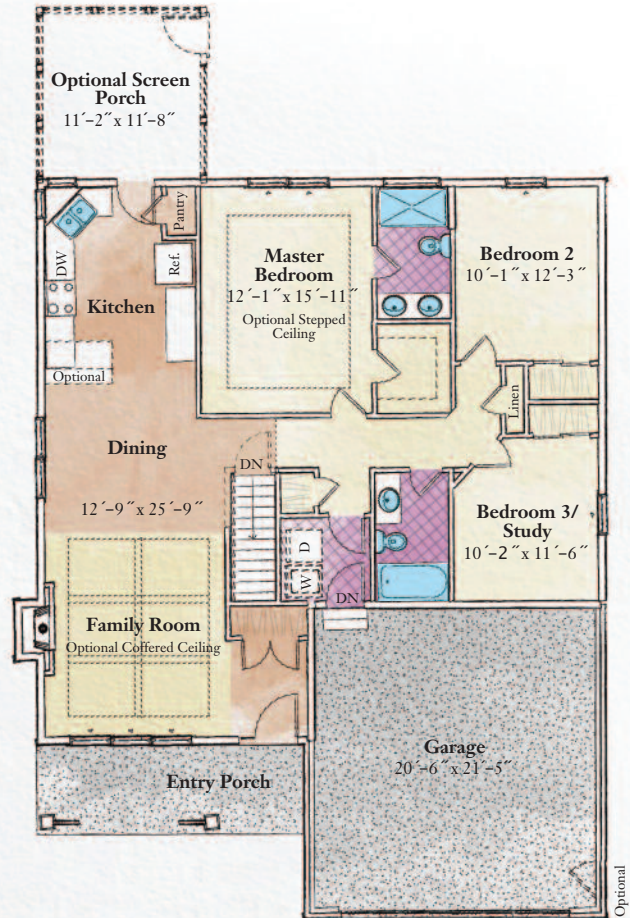
Yates

2 Bedrooms, 2 Bathrooms
3 Bedrooms, 2 Bathrooms

2 Bedrooms, 2 Bathrooms



3 Bedrooms, 2 Bathrooms



Top Features:

- Two bedroom, two bath ranch
- Large front porch
- Walk in closet in master bedroom
- Large foyer closet

Top Features:

- Three bedroom, two bath ranch
- Large front porch
- Walk in closet in master bedroom
- Large foyer closet



Some features shown may be optional. Please consult your salesperson for pricing. Optional features may change square footage

© Copyright Belmonte Builders LLC. All information is for illustrative purposes and may include features and options that are not part of the Contract. Refer to Contract documents for specific details. All information contained herein is the sole property of Peter Belmonte Builders Corp. and is protected under the Architectural Works Copyright Protection Act and subsequent Amendments and shall not be reproduced in any form.

