



The Ashford



Elevation A:

- Shake siding in front of bedroom two, main gable and entry porch gable
- Decorative window mantle with key at study and bedroom two
- 10 inch square columns with radius beam at entry porch

Elevation B:

- Vertical siding in front of bedroom two, main gable and entry porch gable
- Cultured stone wainscoting in front of foyer, study and return wall to foyer
- Board and batten shutters at bedroom two and bedroom three windows
- Two large craftsman columns at front porch



Elevation C:

- Cultured stone wainscoting in front of study, foyer and return wall to foyer
- Vertical siding, mdo trim detail and roofette above window at bedroom two and main gable
- Arched trim detail at upper gable
- Extended front porch with three 10 inch square columns

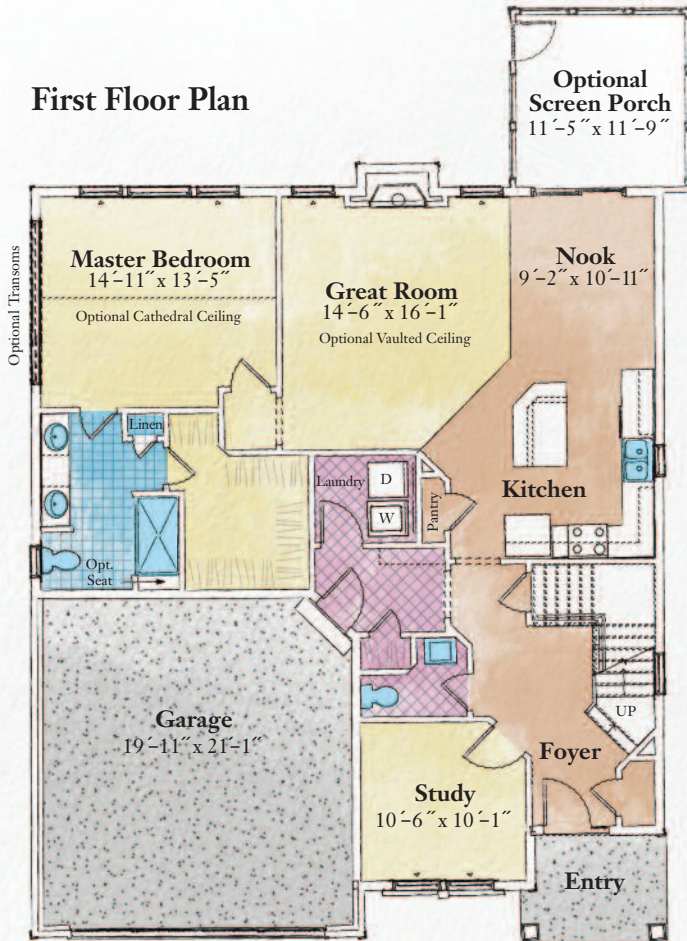


www.belmontebuilders.com
518.371.1000

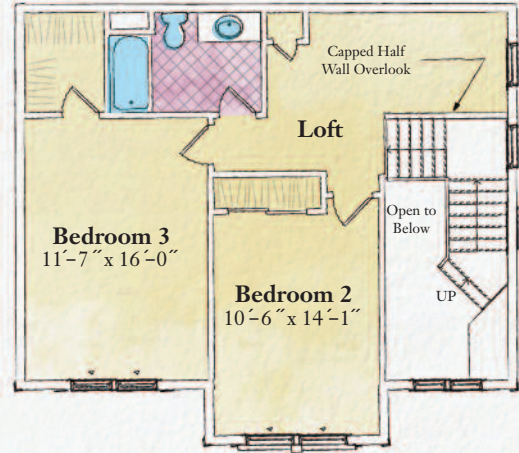
The Ashford

3 Bedrooms & Study, 2 1/2 Bathrooms

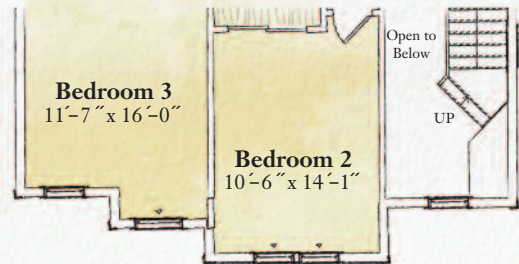
First Floor Plan



Second Floor Plan



Elevation A & B



Elevation C

Top Features:

- First floor master bedroom
- Unique foyer
- Formal study
- Optional vaulted ceiling in great room with overlook from 2nd floor loft
- Optional outdoor spaces



Some features shown may be optional. Please consult your salesperson for pricing. Optional features may increase square footage.

© Copyright Belmonte Builders LLC. All information is for illustrative purposes and may include features and options that are not part of the Contract. Refer to Contract documents for specific details. All information contained herein is the sole property of Peter Belmonte Builders Corp. and is protected under the Architectural Works Copyright Protection Act and subsequent Amendments and shall not be reproduced in any form.