



The Eldan



Elevation A:

- Large front porch with 10" square columns
- Board and batten shutters
- Vertical siding in main gable

Elevation B:

- Large front porch with 10" columns
- Cultured stone wainscoting in front of dining room, foyer, study and garage; no returns
- Shake siding in main gable above foyer
- Louvered shutters
- Decorative window mantle with key at dining room, bedroom 3 and upper foyer



Elevation C:

- European style swooped roof at front entry porch
- Cultured stone wainscoting at study and return wall to foyer; full cultured stone at dining room and foyer
- Vertical siding at main gable and bedroom 3
- Decorative gable vent at main gable
- Board and batten shutters



www.belmontebuilders.com
518.371.1000

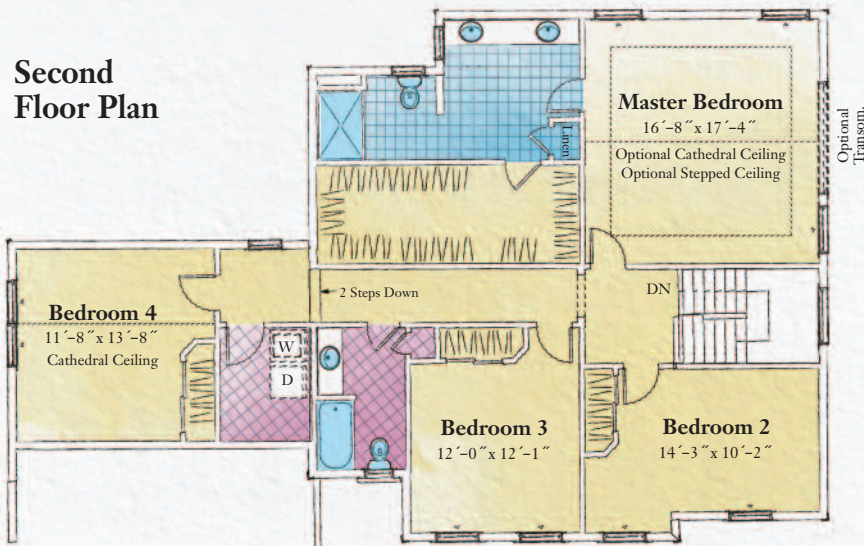
The Eldan

4 Bedrooms, 2 1/2 Bathrooms



Top Features:

- Open foyer
- Fold back staircase with deep landing and large feature window
- Formal dining room
- Large kitchen with snack bar/work island
- Walk-in pantry
- Large master suite with over-sized walk-in closet



Carpet
 Hardwood
 Tile
 Vinyl



Some features shown may be optional. Please consult your salesperson for pricing. Optional features may increase square footage.

© Copyright Belmonte Builders LLC. All information is for illustrative purposes and may include features and options that are not part of the Contract. Refer to Contract documents for specific details. All information contained herein is the sole property of Peter Belmonte Builders Corp. and is protected under the Architectural Works Copyright Protection Act and subsequent Amendments and shall not be reproduced in any form.