



## The Chesapeake



### Elevation A:

- Double square columns at front porch
- Three flat headers

### Elevation B:

- Shake siding in three gables
- Cultured stone wainscoting in front of study with two return walls



### Elevation C:

- Vertical siding and brackets (8) in garage and two upper gables
- Cultured stone wainscoting in front of house and garage with return walls to laundry and foyers



www.belmontebuilders.com  
518.371.1000

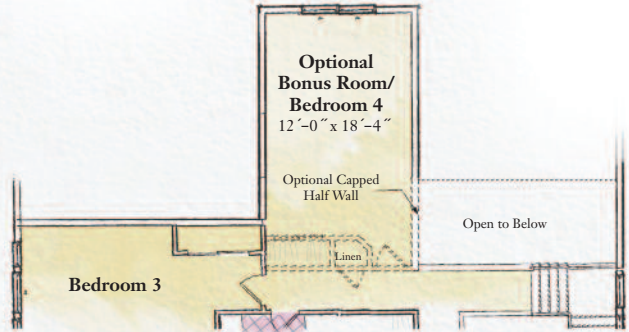
# The Chesapeake

3 Bedrooms & Study, 2 1/2 Bathrooms

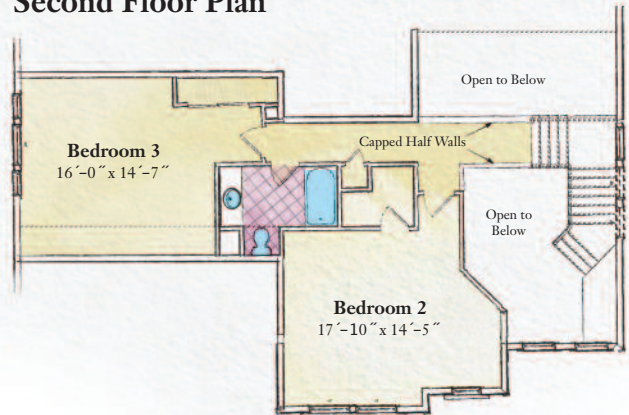
## First Floor Plan



## Second Floor Bonus Room



## Second Floor Plan



### Top Features:

- Large, open two-story foyer
- Vaulted ceiling in great room
- Open great room/kitchen area
- Two large closets in master bedroom
- Unique staircase



Some features shown may be optional. Please consult your salesperson for pricing. Optional features may increase square footage.

© Copyright Belmonte Builders LLC. All information is for illustrative purposes and may include features and options that are not part of the Contract. Refer to Contract documents for specific details. All information contained herein is the sole property of Peter Belmonte Builders Corp. and is protected under the Architectural Works Copyright Protection Act and subsequent Amendments and shall not be reproduced in any form.